



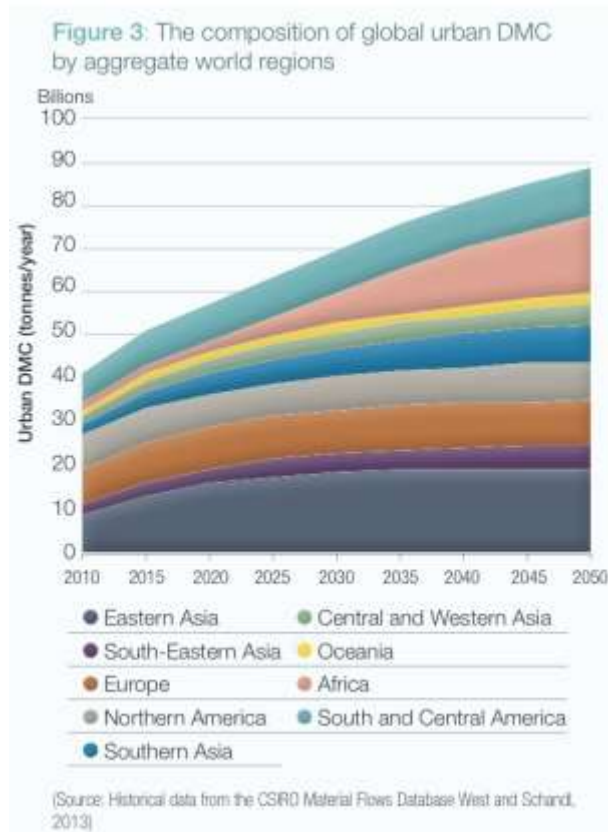
WORLD
RESOURCES
INSTITUTE | ROSS
CENTER

URBAN TRANSFORMATION

“The How”: An Ongoing Discovery Project.

JESSICA SEDDON, DIRECTOR OF INTEGRATED URBAN STRATEGY, WRI ROSS CENTER FOR SUSTAINABLE CITIES

The What



- higher densities and compact urban forms can reduce greenhouse gas (GHG) emissions by a factor of two or more (Salat *et al.*, 2017),
- human-scale functionally mixed neighbourhoods could reduce energy consumption by a factor of two or more,
- energy-efficient buildings could reduce energy demand by a factor of two or more,
- efficient systems could achieve a further 20 percent energy saving and
- behavioural changes could reduce energy demand by a factor of two (Salat, 2009).

Altogether, this would result in a tenfold reduction in energy use, which significantly exceeds the factor 5 target that is usually referenced (von Weizsacker *et al.*, 2009).

4. **City planning 'defaults' must be changed:** Cityscapes need to be designed for people not cars, and must allow the poor in particular to access the opportunities of the city. We recommend a radical change in default approaches to urban planning to prevent uncontrolled sprawl and 1) promote high-density, mixed-use nodes with safe and inviting streetscapes, connected by efficient and affordable mass transit systems; 2) liveable, functionally and socially mixed neighbourhoods; 3) resource-efficient smart buildings and urban energy, waste and water systems; and 4) changing values and behaviour to support this.

A Bit About WRI Ross Center

We work with business, government, and civil society leaders around the world to achieve more compact, connected, resource efficient, and most of all, livable, cities.



Research & Reframing

Convening, Alignment & Coalitions

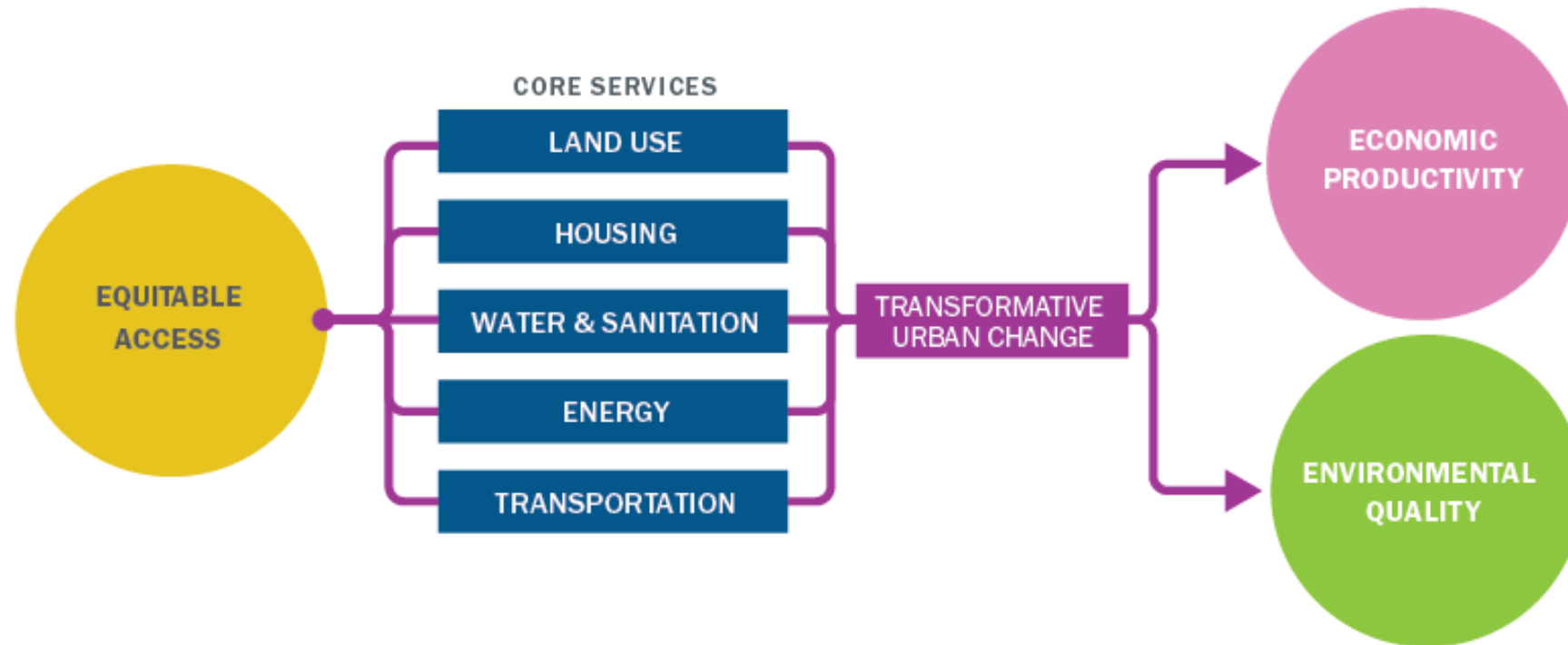
Toolkits & Technical Support

Direct Action & Pilots

Towards a More Equal City: Framing the Opportunities and Challenges

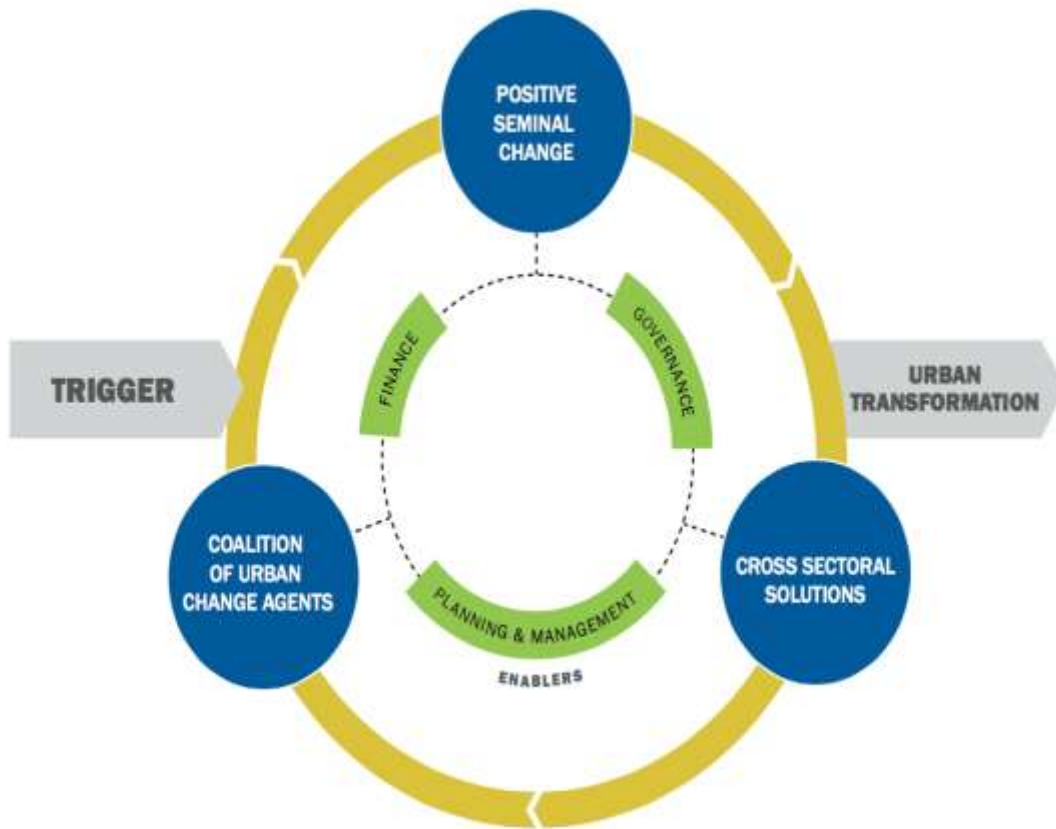
Victoria A. Beard,
Anjali Mahendra
Michael I. Westphal

4



CITIESFORALL.ORG

World Resources Report – Understanding Transformative Urban Change



- Our experience suggests that when cities solve a seminal problem that touches many people's lives, this momentum for positive change can initiate change in other areas creating a virtuous cycle.
- A seminal problem is one that is sufficiently large and complex that its negative effects are felt by large segments of the urban population.
- The World Resources Report will examine the potential of solutions to seminal problems to trigger broader cross-sectoral, institutional, citywide transformation through a series of 8 case studies

Casting a Wider Net: The Ross Prize



TRANSFORMATION (n): "thorough or dramatic change in form, function, or appearance"

People change cities every day: they build, they move, they connect. They create the policies and codes that shape urban evolution. Often these changes are incremental; sometimes they are transformative—creating ripple effects far beyond the places, times and purposes for which they were started.

With the support of Stephen M. Ross, WRI is launching a \$250,000 prize designed to reward and celebrate projects that have changed cities for the better.



Apply now: wrirosscenter.org/prize

Testing & Refining Practical Hypotheses

1. Pilots & Placement Matter

- It's not just what the research, data, or demonstrations show, it's how they interact with the dynamics of the city and its larger set of influences.

1,297

low-income families
at **Junção Project**



The new regulations will
impact the construction of

600,000

houses
benefiting
more than

1.8

million
people

2014

WRI Brasil engages
stakeholders at
Junção Project

2015

WRI Brasil
initiates
collaboration at
federal level

2016

Civil work starts
at Junção Project

2017

**Directive no.
269/2017** is
launched



WORLD RESOURCES INSTITUTE

Testing & Refining Practical Hypotheses

1. Pilots & Placement Matter

- It's not just what the research, data, or demonstrations show, it's how they interact with the dynamics of the city and its larger set of influences.

2. Engagement: shift in roles when moving from sectoral to integrated approaches



Building Efficiency Accelerator



STAKEHOLDERS

- National and provincial governments
- Local governments
- Energy utilities
- Civil society organizations
- Developers and self-help builders
- Design & construction professionals
- Suppliers & manufacturers
- Financial service providers and investors
- Building owners and managers
- Building occupants

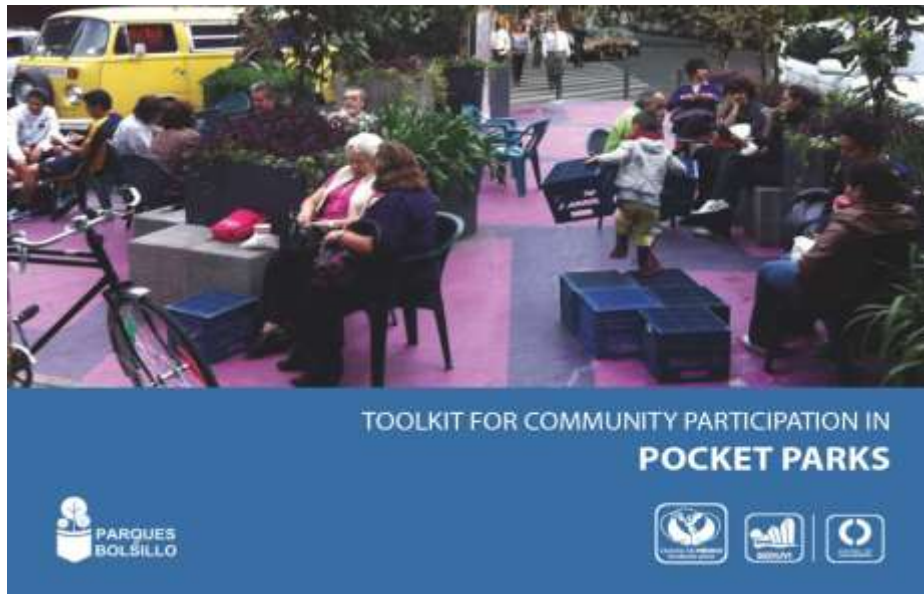


MEET THE CHALLENGE, TRANSFORM YOUR NEIGHBORHOOD

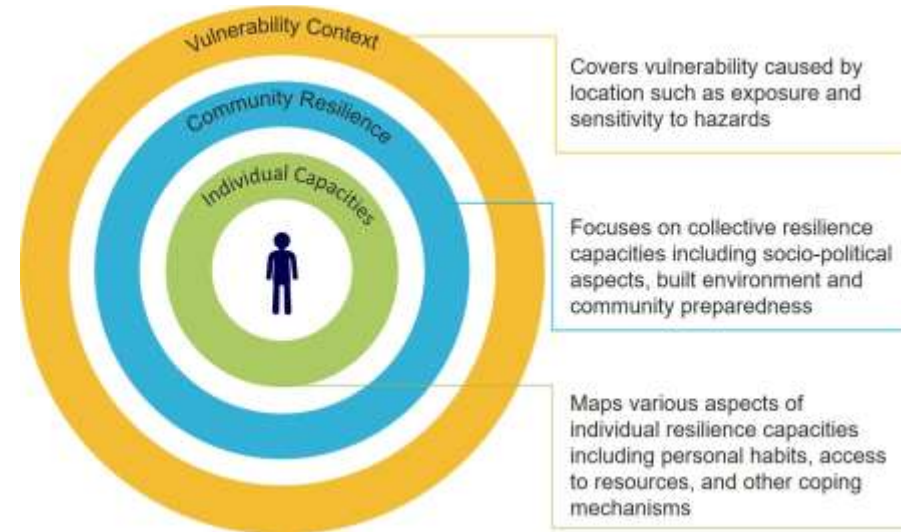


Testing & Refining Practical Hypotheses

1. Pilots & Placement Matter
 - It's not just what the research, data, or demonstrations show, it's how they interact with the dynamics of the city and its larger set of influences.
2. Engagement: shift in roles when moving from sectoral to integrated approaches
3. **Keep people, their perspectives, and their knowledge at center stage, no matter what the project metrics are.**



Systematizing Participation



UCRA II: Amplifying Community Intuition & Assets

TOD DIALOGUE FACILITATION IN BELO HORIZONTE



37

participants



4

working
days

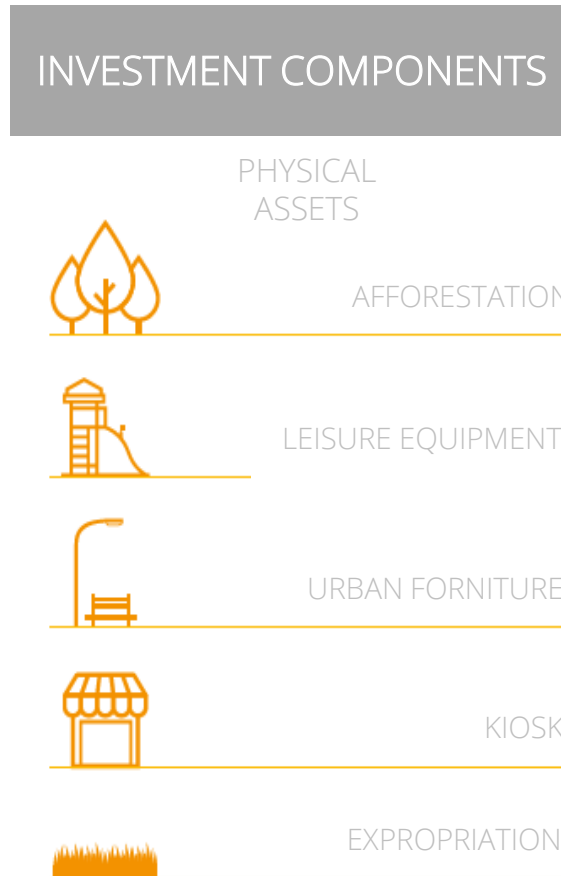


WRI BRASIL

TOD => POD: DIALOGUE FACILITATION IN BELO HORIZONTE

During the training, the participants identified the **Investment Components** and the **Funding Sources**.

For each component of the project, they found the probable funding source for the respective element.



Lagoinha Park:
one of the results of the discussion